

Local Plan 2016-2036
Part 1: Planning Strategy

**Policies Map amendments to reflect the proposed
Main Modifications to the Submission Local Plan**

NFDC Local Plan examination: Policies Map amendments to reflect the proposed Main Modifications to the Submission Local Plan

November 2019

Correspondence from the appointed Planning Inspectors in October 2019 (EXAM38a and EXAM38b) identified the Main Modifications considered necessary to make the submitted Local Plan sound, drawing on the schedules of suggested Main Modifications produced by the Council (EXAM34a and EXAM35).

These are set out in the document 'Schedule of proposed Main Modifications to the Submission Local Plan'.

Some of these Main Modifications will require corresponding amendments to the Policies Map which accompanies the Submission Local Plan. However, the appointed Planning Inspectors do not have a remit to recommend modifications to it, therefore these amendments do not form part of the proposed Main Modifications.

In responding to the consultation, please do so via the schedule of Schedule of proposed Main Modifications.

This document sits alongside the Schedule of proposed Main Modifications and highlights the consequential changes to the Policies Map. Both a plan before and after the amendments is included in this document for each area affected.

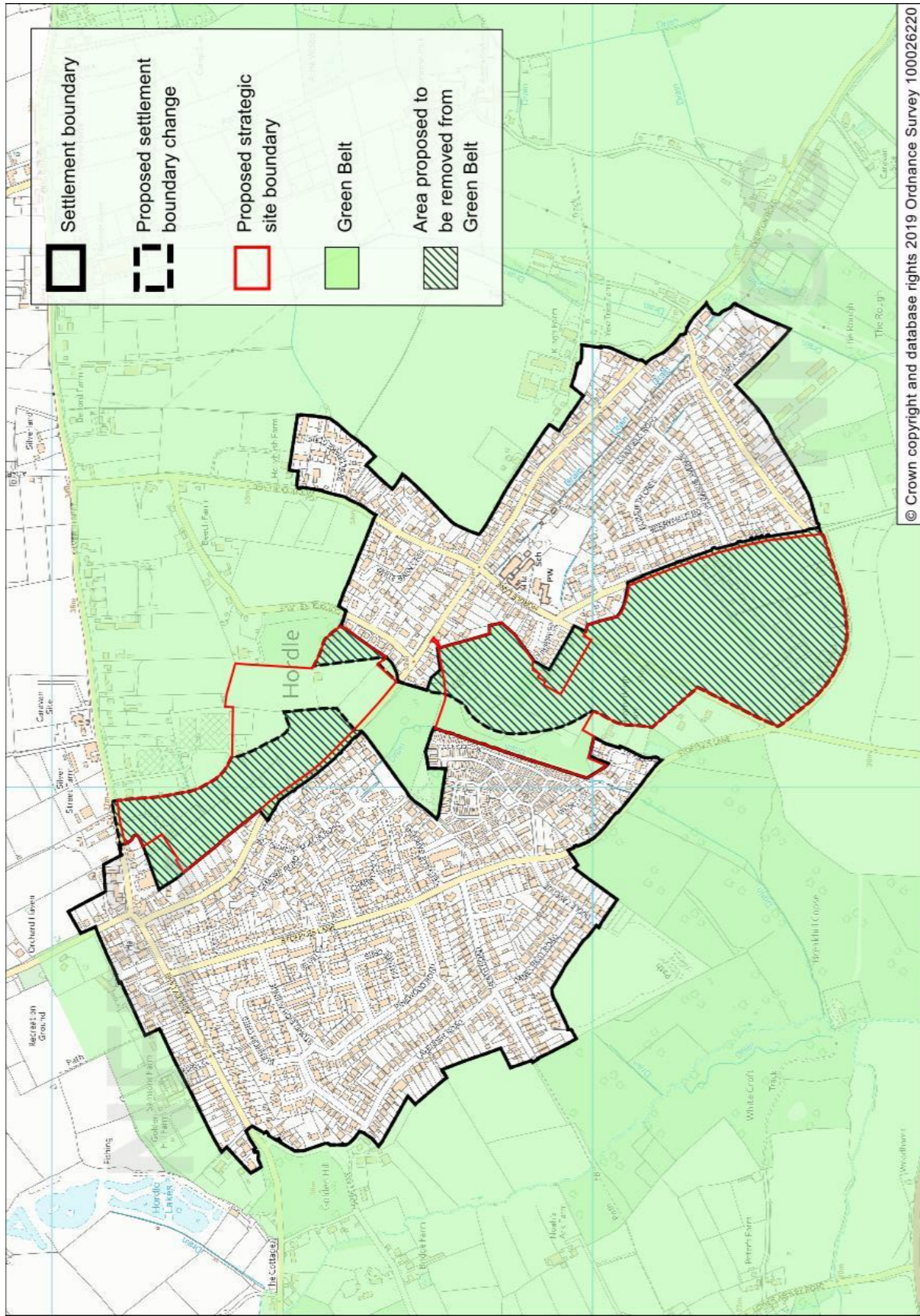
SS8 Land at Hordle Lane, Hordle and SS9 Land east of Everton Road, Hordle

Submitted Local Plan

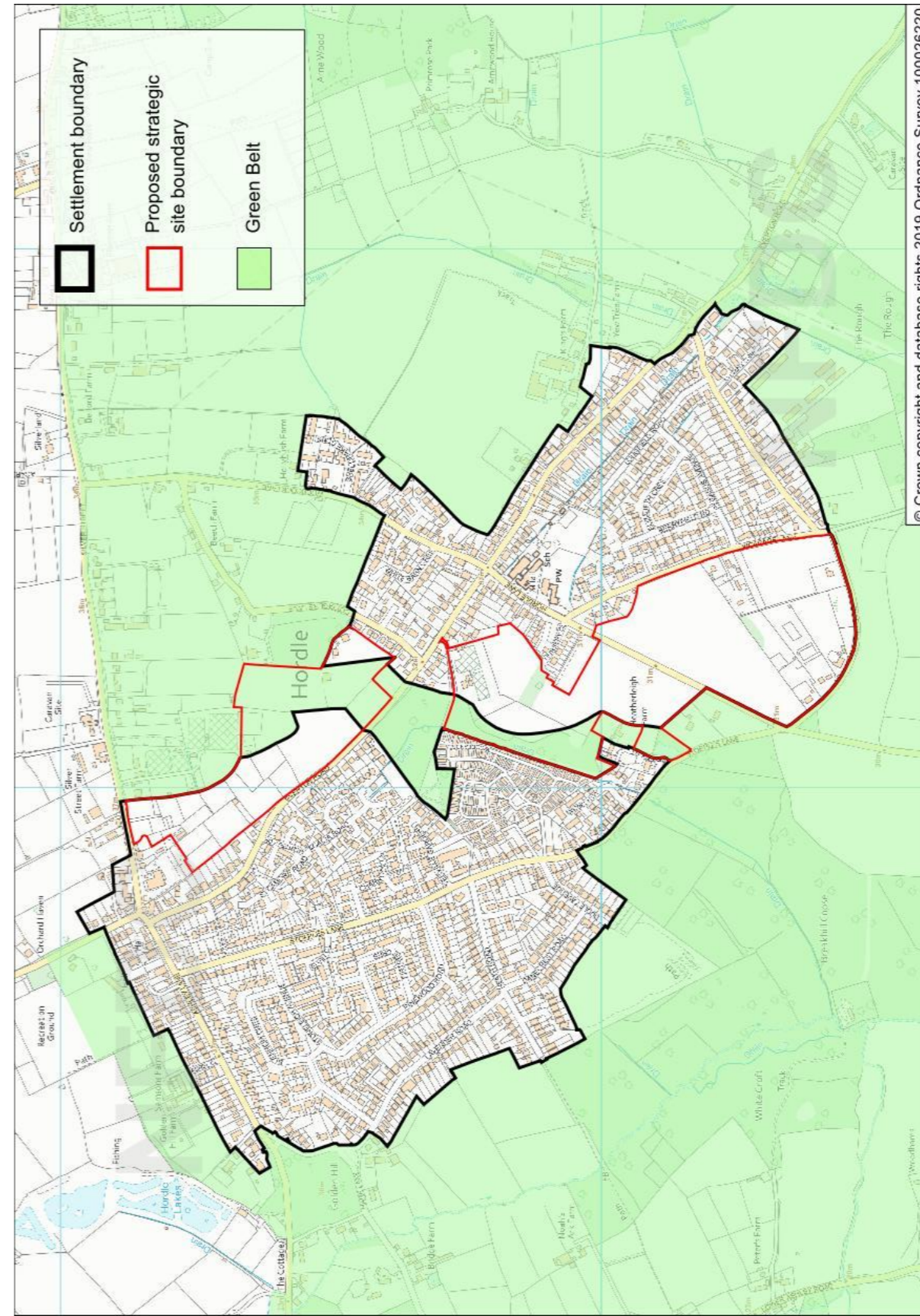
Note: The submission Local Plan Paragraphs 9.89 and 9.93 stated that *“The precise alignment of the settlement boundary in relation to the Green Belt will be determined at planning application stage, and will define a new the built-up area boundary for the eastern part of Hordle village”*.

Modified Local Plan

Policy	Modification	Reason
SS8 Land at Hordle Lane, Hordle	To define the Green Belt Boundary. Amend the site allocation boundary to: <ul style="list-style-type: none"> Exclude the recently build Nursery Close development and its consented allotments area from the site allocation boundary Extend the site allocation boundary and adjust the Concept Masterplan to include new area of open space north of Stopples Lane (to remain within the Green Belt designation). 	Pursuant to Main Mod 25.
SS9 Land east of Everton Road, Hordle	To amend and define a revised Green Belt and site boundaries around Cottagers Lane / Everton Road, with corresponding settlement boundary changes.	Pursuant to Main Mod 26.



Submitted Local Plan

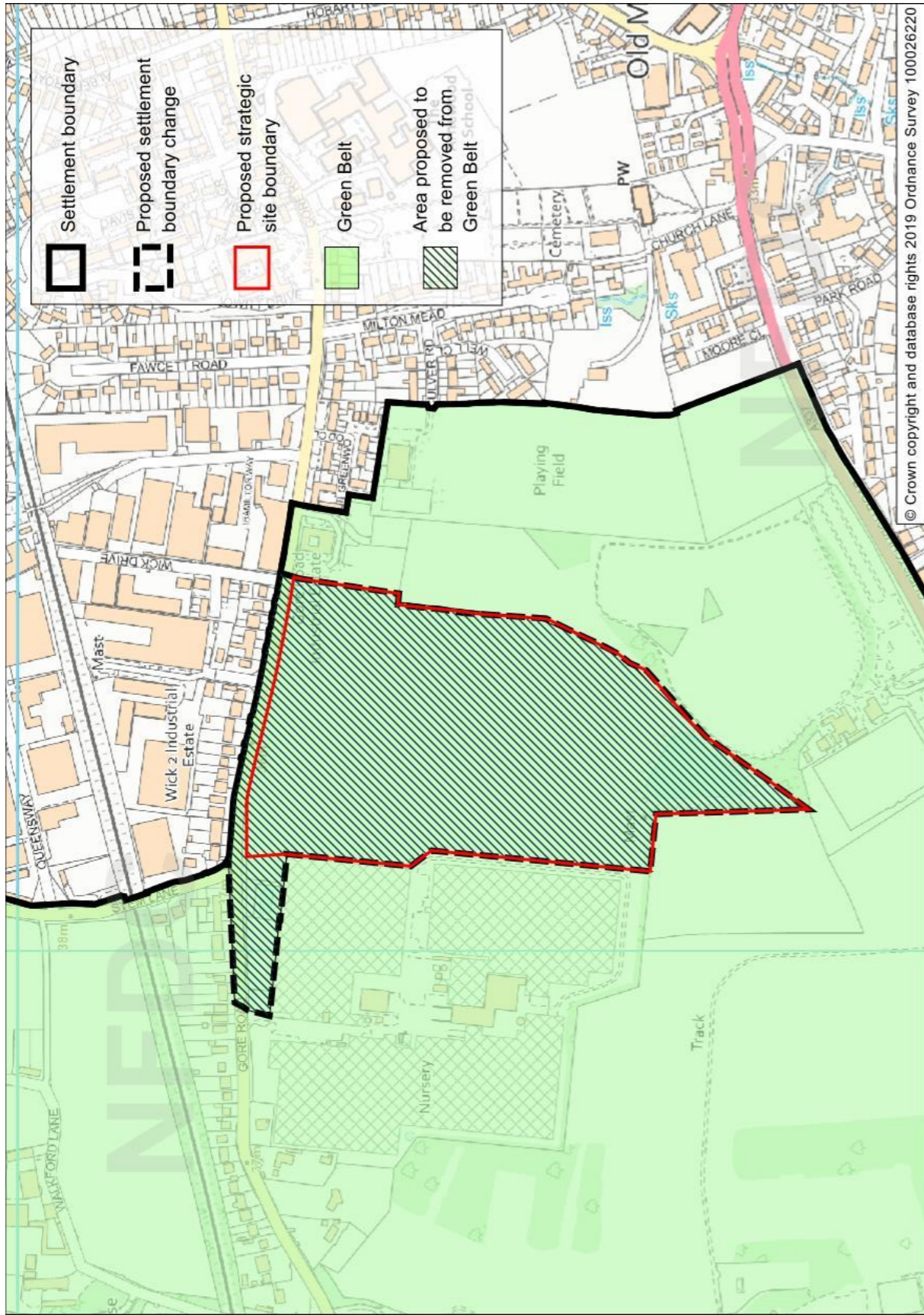


Modified Local Plan

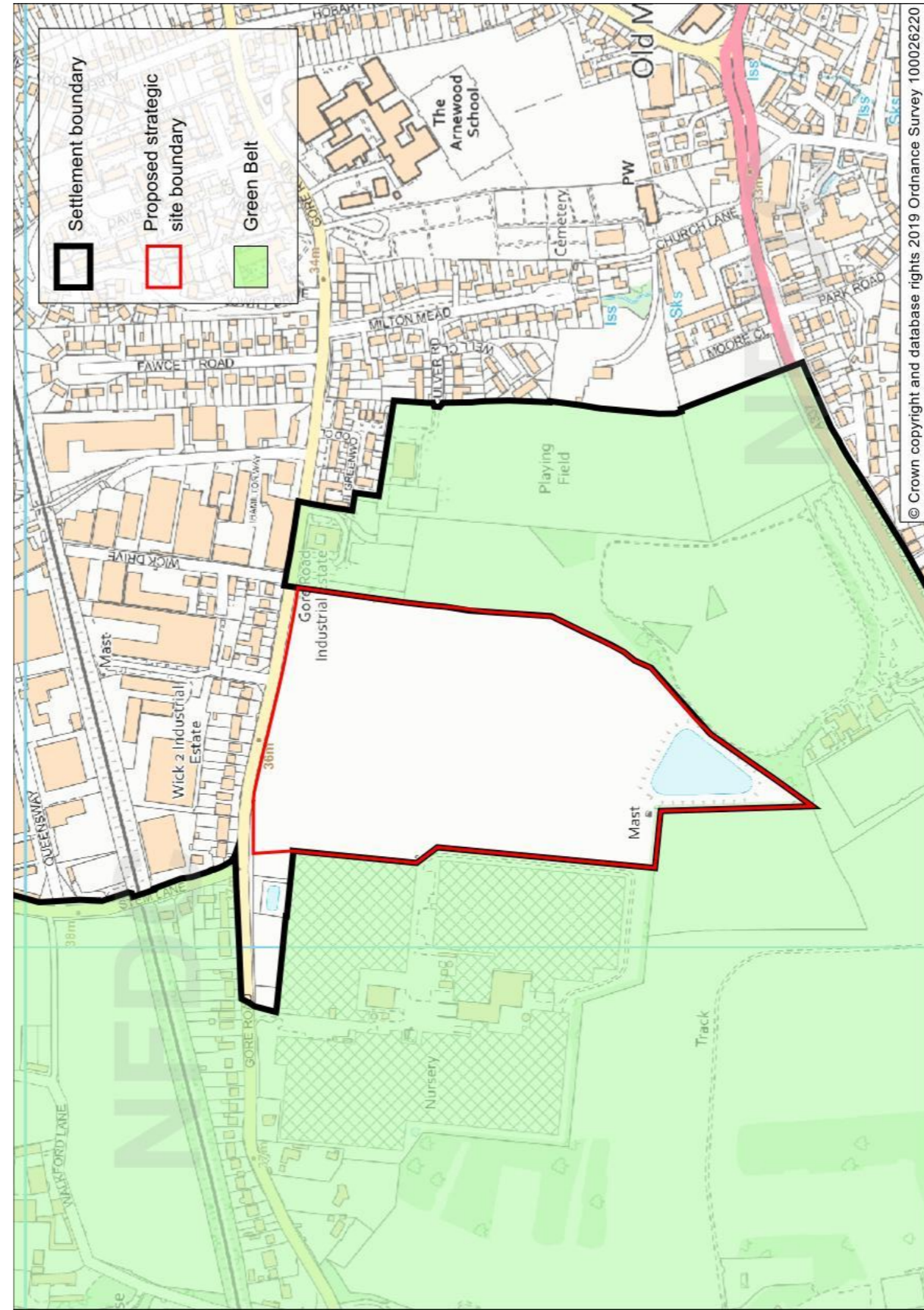
SS11 Land to the south of Gore Road, New Milton

Modified Local Plan

Policy	Modification	Reason
SS11 Land to the south of Gore Road, New Milton	To amend the allocation, Green Belt and settlement boundaries to exclude strip of land on the north east corner,	Pursuant to Main Mod 28.



Submitted Local Plan

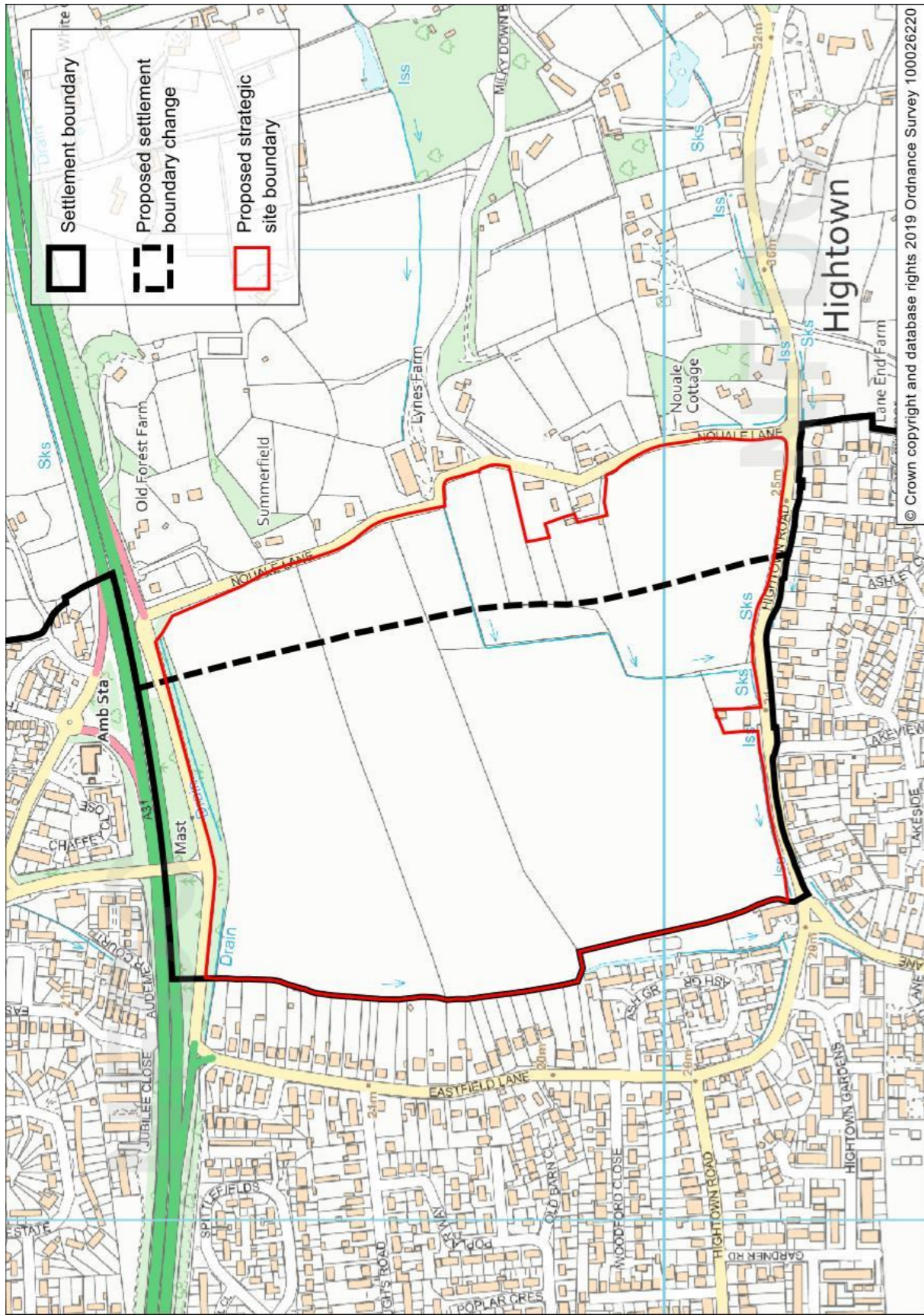


Modified Local Plan

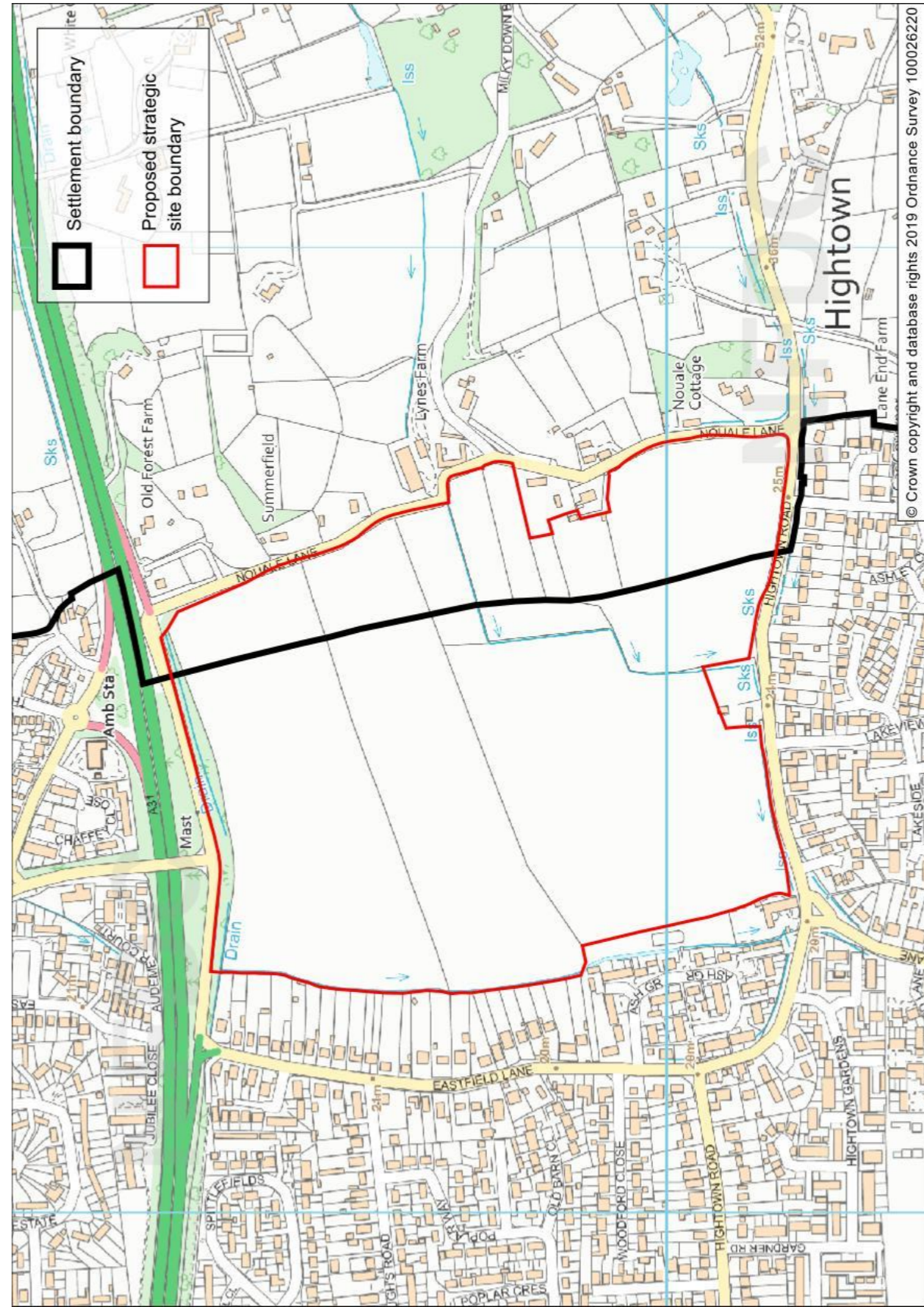
SS14 Land to the north of Hightown Road, Ringwood

Modified Local Plan

Policy	Modification	Reason
SS14 Land to the north of Hightown Road, Ringwood	To correct the allocation boundary to remove Oak Cottage (140 Hightown Road) and adjoining field	Pursuant to Main Mod 31.



Submitted Local Plan



Modified Local Plan