

ANRG Diagram 2: Relieving the severance of a road

to enable the network of spaces to become ANRG compliant

Secondary Space

This secondary space remains non-compliant as it is further than 500m from a Main Space

Secondary Space

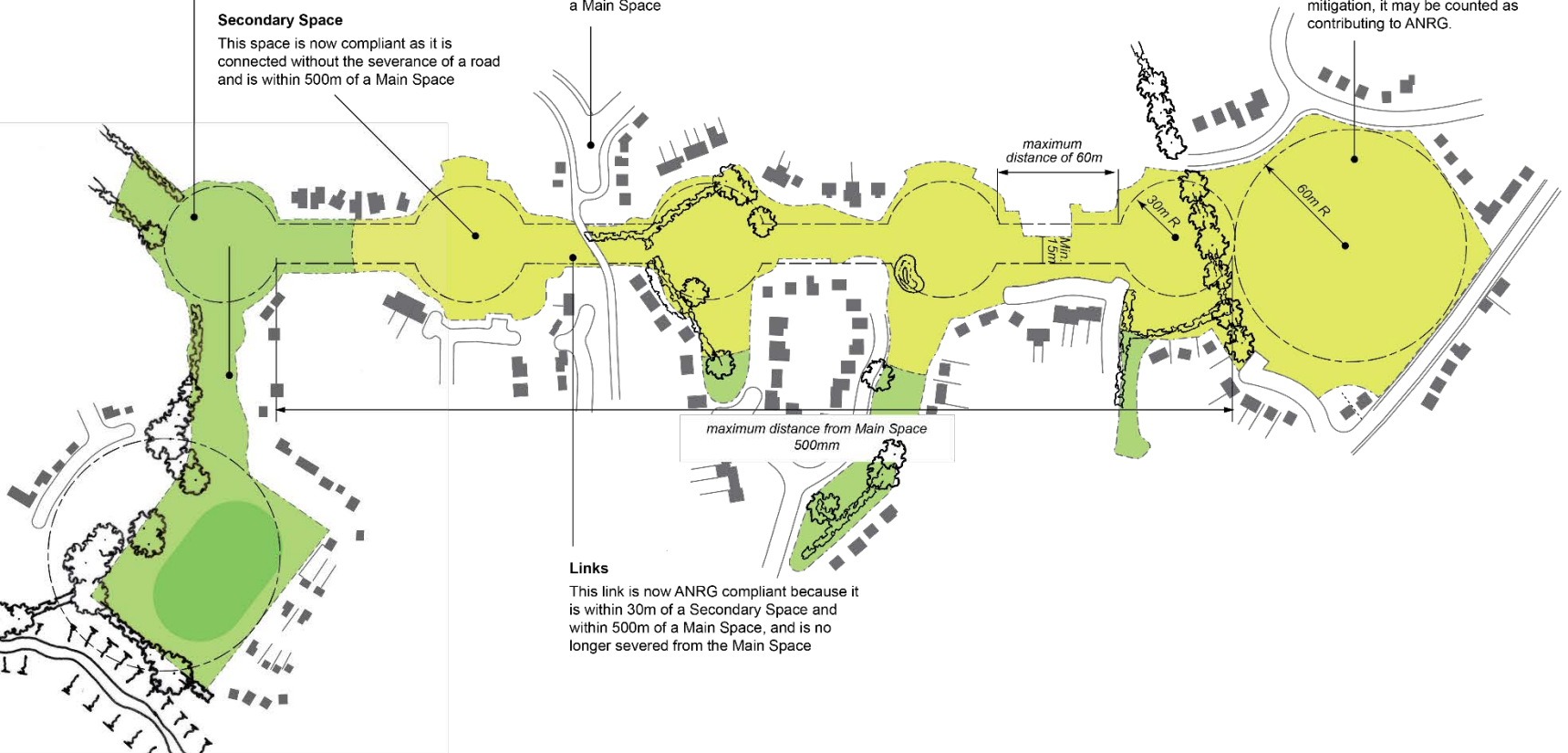
This space is now compliant as it is connected without the severance of a road and is within 500m of a Main Space

Severance



Now the road is reduced to a footpath link, the spaces to the west of it are ANRG compliant because they are within 500m of a Main Space

Main Space

Provided that a space at least 120m in any direction (60m radius) is designed to embrace the principle elements for mitigation, it may be counted as contributing to ANRG.



Key

-  Land that meets the purpose of ANRG or public open space
-  Land that meets the purposes of POS but is not dimensionally compliant to meet those of ANRG