

ANRG Diagram 1: a comprehensive green infrastructure

which takes mitigation compliant spaces as its foundation:

connecting neighbourhoods, enhancing habitats and providing amenity

Severance

This road severs the linked network at this point. Spaces beyond this point cannot be considered as ANRG compliant unless the road is designed to allow extremely easy crossing of people and animals (e.g. narrowed section of shared surface, traffic calming table with road serving a small number of dwellings)

Secondary Spaces

A space that is at least 60m in any direction (30m radius) if designed to embrace the principle elements for mitigation may be counted as contributing to ANRG.

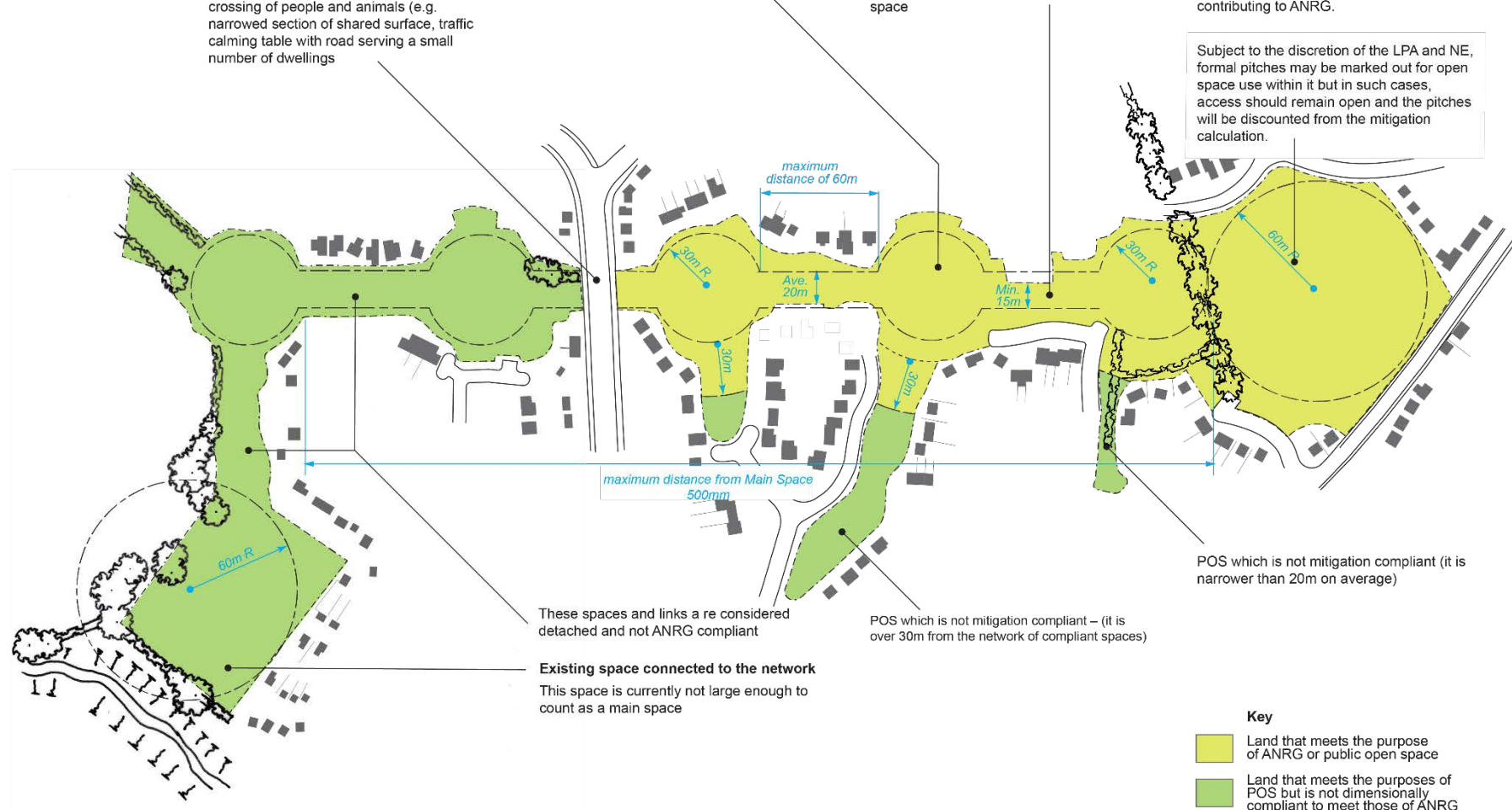
Links

Corridors between or linking to spaces may be counted as ANRG if they are 20m wide on average (min 15m at any point) and extend no more than 30m from edge of the space

Main Spaces

Provided that a space at least 120m in any direction (60m radius) is designed to embrace the principle elements for mitigation, it may be counted as contributing to ANRG.

Subject to the discretion of the LPA and NE, formal pitches may be marked out for open space use within it but in such cases, access should remain open and the pitches will be discounted from the mitigation calculation.



maximum distance from Main Space 500mm

maximum distance of 60m

Ave. 20m

Min. 15m

These spaces and links are considered detached and not ANRG compliant

POS which is not mitigation compliant – (it is over 30m from the network of compliant spaces)

Existing space connected to the network

This space is currently not large enough to count as a main space

POS which is not mitigation compliant (it is narrower than 20m on average)

Key

- Land that meets the purpose of ANRG or public open space
- Land that meets the purposes of POS but is not dimensionally compliant to meet those of ANRG